



KNYSNA
EDUCATION TRUST

📍 Melrose House
34 Queen Street
Knysna, 6571
☎ +27 (0) 44 382 4638
🌐 www.knysnaedutrust.co.za

Knysna-Bitou Early Education Highlights

KET Concept

- KET is an early childhood development non-profit, currently benefitting 8,262 children younger than 6 years old in the 1200sq km Knysna / Bitou service area.
- There are more than 9,000 children unaccounted for in the area who receive NO early childhood development.
- Through the KET programmes, 77% of our early childhood development programme participants are primary school ready, versus the national average of less than 35%.
- Children who miss out on a 22 month early childhood development programme remain in the same underdeveloped position 22 years later without meaningful costly intervention later on.

KET Finances

- KET is a non-profit organization whose administration expenses are 12% of income, versus the national average of between 15%-25%.
- KET receives no Government grants for our core programmes (literacy, numeracy, teacher training and nutritional support, parent training and Baby-Toddler programme, ECD facility infrastructure upgrades) and relies entirely on donations received.
- All donations made by donors (cash or in-kind) will be issued with a SARS S18(A) tax certificate for tax deduction purposes.
- KET is audited annually; has always received a clean bill of health and whose annual financial reports are available in our AGM reports on our website.

How you can help KET

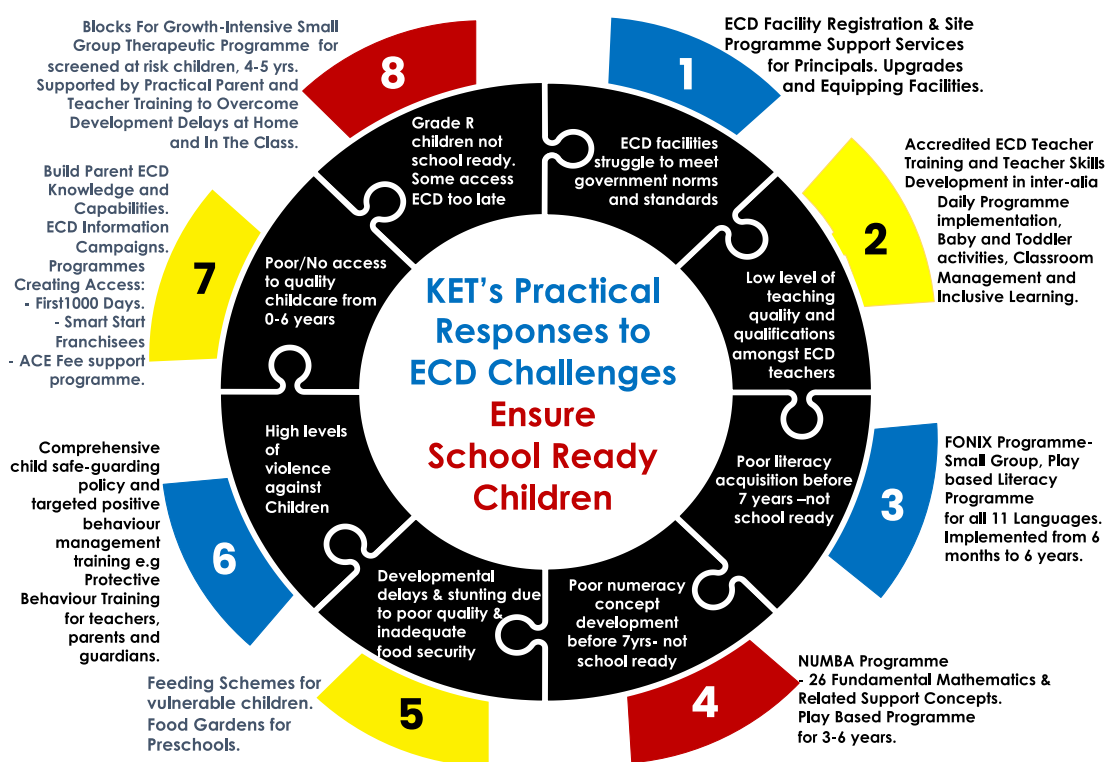
- Make a donation via one of our investment options.

1. Introduction

The Southern Cape Education Trust t/a Knysna Education Trust (KET) is a Non-Profit Organisation (NPO) providing essential support services to the Early Childhood Development (ECD) Sector since 1993. Based in Knysna; our 1200 sq. kms service region is comprised of the Knysna and Bitou (Plettenberg Bay) municipal areas.

Our goal is to develop Grade R, **School Ready Children** by ensuring all preschool children aged 6 months to 6 years, in our service region, have easy access to registered ECD services implementing quality learning programmes.

Our comprehensive support model is designed to address the ECD sector challenges, while ensuring that children, from conception to 6 years old reach age-appropriate developmental milestones in key areas namely, physical, intellectual, social and emotional.



Research¹ confirms investing in a child's early years offers an unparalleled opportunity to reverse the intergenerational cycle of poverty that hinders equitable growth and the prosperity of a nation. With the release of two recent national studies (Thrive by Five and the ECD Census 2021), we now have hard evidence on the size of the problem in South Africa. The studies reveal that 65% of young children are not ready when they enter formal school. Beyond this, statistics show that 48% of ECD teaching staff are ill equipped to run classrooms.

The research was significant because it presented insights into the school readiness children possess by age five. Children who started school on track were more likely to stay on track and lead healthy and productive lives. It would be difficult for children who were not on track at that age to catch up to their peers later in their education.

A study by the United Nations Educational, Scientific and Cultural Organisation (UNESCO) showed that children who were delayed in development by 22 months were still likely to be in the same underdeveloped position at 22 years without meaningful interventions.

This very short window of opportunity is critical for determining a child's readiness for school, but also affects their ability to thrive later in life. This is time that is very difficult and costly to "make up" at a later stage in formal

¹ <https://heckmanequation.org/resource/invest-in-early-childhood-development-reduce-deficits-strengthen-the-economy>

schooling. Early childhood development programmes are largely provided by NPOs, micro-social enterprises, or subsistence entrepreneurs.

The triple benefit of sustained investments in Early Childhood Development services are:

- i) the protection and promotion of children's right to early childhood development,
- ii) the facilitation of women's labour force participation by the creation of paid jobs in the care economy
- iii) children start their development on the right trajectory improving their chances of finishing school and positively contributing to society as adults.

2. Who's Benefiting in Knysna and Bitou?

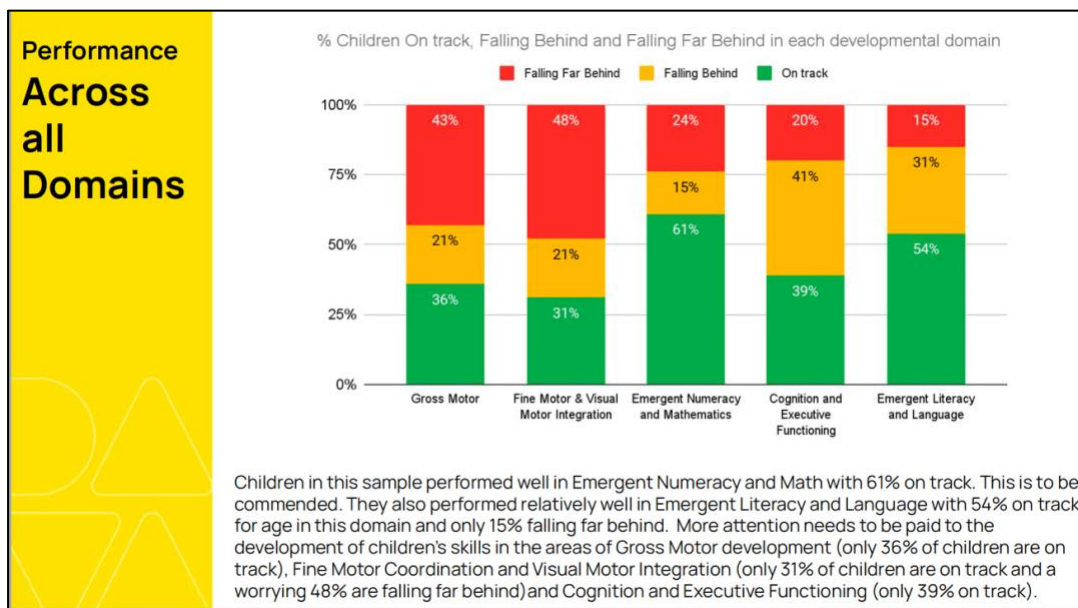
- ❖ 8262 Children – younger than 6 years
- ❖ 141 preschools (Registered and Unregistered preschools.)
- ❖ 380 Children in Day other ECD services (Smart Starter Franchisee programme)
- ❖ 564 Principals and teachers
- ❖ 53 Smart Starter Franchisees.

At present locally there are conservatively a further 9 000 children, below the age of 6 years old, who remain unaccounted for and who therefore currently do not benefit from any ECD services.

3. We're Beating National Statistics in the Garden Route.

a. Literacy and Mathematics

At the end of the 2022 academic year, an independent organisation assessed the children's progress. The findings of the Early Learning Outcomes Measure (ELOM) assessments revealed that the children who were exposed to the programmes (selected from a sample group) were scoring higher than the national average of children of similar age in the same socio-economic group, in three of the five assessed domains. Even though the children are still below the preferred level on an international scale, we were encouraged to know that both the numeracy and literacy programmes are making a positive difference. We took some learnings from the findings and are excited to see an even better score at the end of 2023. Below is an extract from the ELOM Report.



In addition, according to a local survey done at the end of the academic year in November 2022 in eight KET affiliated preschools with 77 participants aged 5-6 years old - **72% of the Grade Rs were formal school ready**. This means that at the time of assessment, they were equipped (achieved a score of 80% or higher) with the foundational skills needed, as prescribed by Department of Basic Education, to tackle the rigours of further learning in the first year of foundation phase (Grade 1).

b. Early Childhood Facility Registrations

According to the Western Cape Education Department, only about **45% of ECDs in the province** are registered.

In the Bitou and Knysna municipalities KET works closely with each facility in the area to monitor health and safety standards and assist ECDs to become registered.

Data for Knysna and Bitou municipalities is more positive, with **63% of ECD facilities registered**. Specifically, 28 out of 47 ECDs in Bitou Municipality and 50 out of 77 ECDs in Knysna Municipality are registered.

4. Investment Options

We are a NPO that largely relies on the generosity of local, national, and international individuals, businesses, corporates, and foundations. This overview seeks to provide potential donors with clarity about our operations as well as our contributions to society.

Donations, no matter how small, helps to fund the vital work being done to ensure no child is left behind. KET is fully compliant with all legislation pertaining to donations and all donations are eligible to receive a section 18A tax clearance certificate. **Our administrative expenses are 12% of turnover.**

Any contributions received directly support the entities mentioned above, in additionally supporting mainly black women and youth to create sustainable access to skills development, and through this to the economy.

Contact our General Manager to learn how to support any of the options below.

- a. Programme Partnerships.
 - 1. Accredited Teacher Training (Student Bursary Sponsorships)
 - 2. Literacy and Numeracy Training (FONIX and NUMBA)
 - 3. Health, Safety, and Nutrition.
 - 4. Baby and Toddler Programme.
 - 5. Caregiver / Parent Training.
 - 6. ECD Facility Registration-micro-social enterprise support.
 - 7. Adopt-A-Child's Education (ACE) Programme.
- b. B-BBEE and Corporate Social Investment (CSI) Partnership.
- c. Build or Upgrade a Preschool Facility.
- d. Charitable bequest: Leave a Legacy.
- e. Cash donations or in-kind.

5. In Conclusion - 'No child should be left behind!'

This simple mantra is what drives KET; our multi-model ECD service framework has been developed and implemented to ensure universal access to quality preschooling for young children in the Garden Route.

With your help we can continue to ensure preschool children are better equipped to start their formal school careers with an even greater chance of success.

If you're as passionate about the positive progress we're making in the ECD sector and young children's lives, please support our work. Together we can make a positive difference.

Our website offers more details of our work. (www.knysnaedutrust.co.za).

Alternatively our general manager will email you a detailed Prospectus copy on request.
general.manager@knysnaedutrust.co.za

Thank you for taking the time to read our story. We look forward to partnering with you soon.